

Pneumatic Actuator



CANAWEST TECHNOLOGIES INC.
VALVE SOLUTION STRATEGIES



Scotch Yoke Pneumatic Actuator

RAG-Series

RAG100DA & RAG108DA

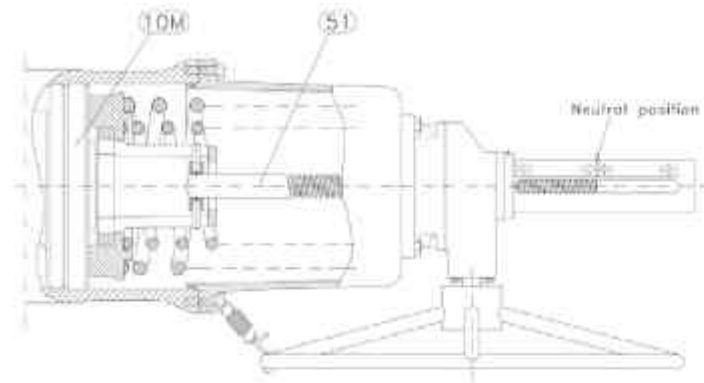


For Demanding Conditions

- Strong, compact actuators for large valves and high torques.
- Epoxy coated ductile iron in cylinder, end plates and spring housing.
- Inside of cylinder Teflon lined for low friction and high corrosion protection.
- Connection according to DIN3337/ISO5211 to valve.
- Connection according to VDI/VDE3845 to solenoid valve.
- Prepared for quick operation (extremely fast emergency).
- Optional: Manual override.

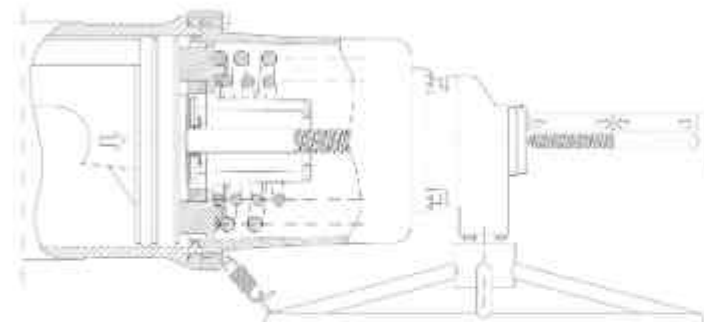


RAG With Handwheel



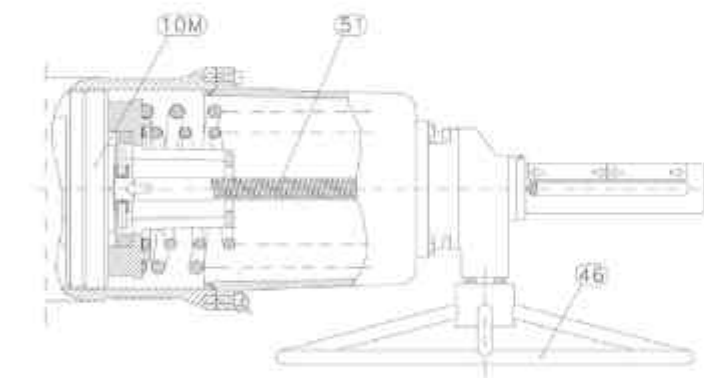
Neutral position

With the stem 51 in neutral position the piston 10M can move freely and the actuator can be driven pneumatically. The picture shows a double-acting actuator RAG-DA in "open" position or a single-acting actuator RAG-SR in "closed" position.



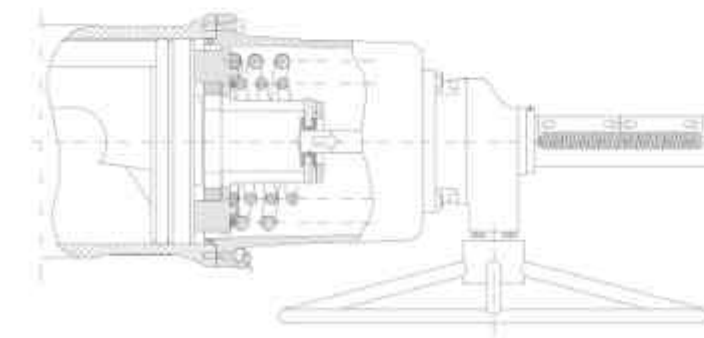
End position adjustment

M1 in neutral position works as an end position stop.
RAG-DA: Adjustment of "closed" valve position.
RAG-SR: Adjustment of "open" position.
Adjustment: $+3^\circ / -90^\circ$ in relation to the end position.



Manual operation

RAG-DA: The handwheel 46 is turned anti-clockwise. The stem 51 and the piston 10M are pressed inwards. The valve opens.
RAG-SR: The handwheel is turned clockwise. The stem and the piston are pressed inwards (by spring force or by handwheel force). The valve closes.

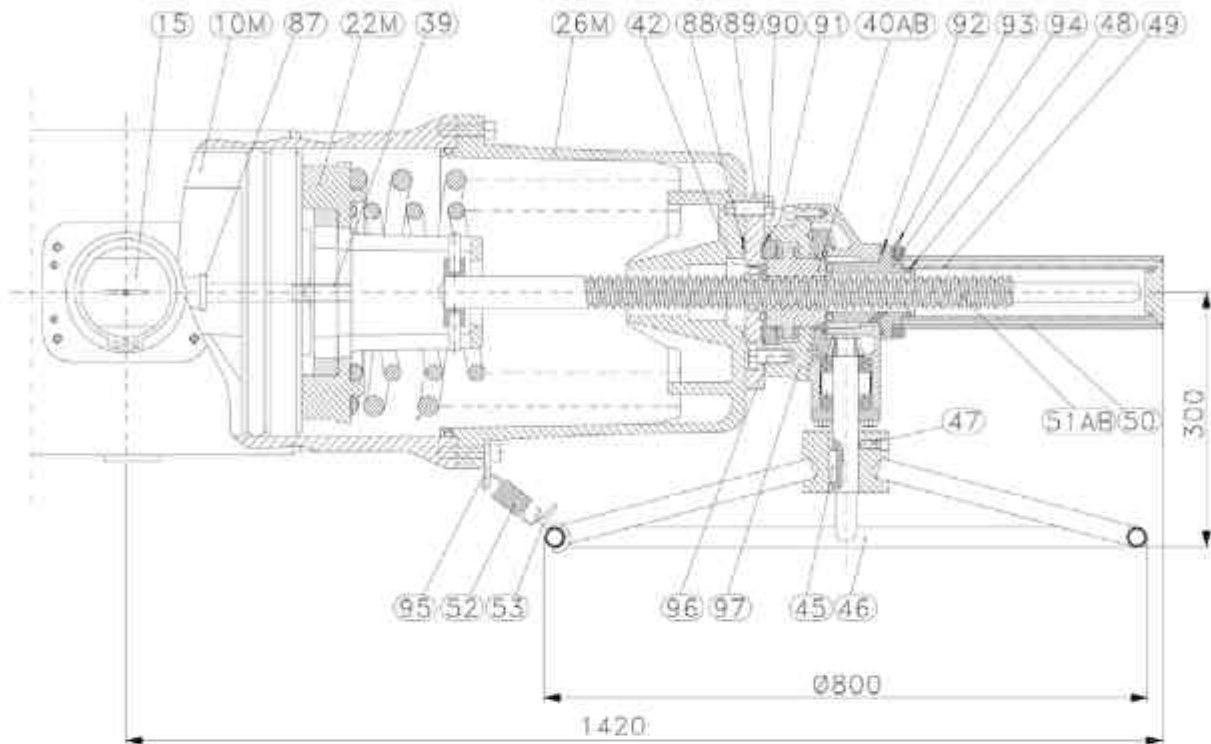


Manual operation

RAG-DA: The handwheel is turned clockwise. The stem and the piston are drawn outwards. The valve closes.
RAG-SR: The handwheel is turned anti-clockwise. The stem and the piston are drawn outwards. The valve opens.

The actuator drive shaft is thus turned in the same direction as the handwheel. When the actuator has been manually operated, a return to the neutral position must take place before remote operation can be performed again.
RAG-SR in "Fail open" design and RAG-DA actuators with "SR-mounted" pistons have reversed function compared to the above.

RAG With Handwheel: **Materials**



Pos	Description	Material
10M	Piston in manual operation design	Aluminium
15	Shaft (standard design)	Steel, yellow chromated
22M	Spring guide M	Ductile iron
26M	Spring guide M	Ductile iron
39	Retaining screw	Steel
40A	Stem nut for RCG-DA (right hand thread)	Aluminium bronze
40B	Stem nut for RCG-SR (left hand thread)	Aluminium bronze
42	O-ring (2 pcs)	Nitrile
45	Key	Key steel
46	Handwheel with hub	Steel, epoxy painted
47	Set screw	Stainless steel
48	O-ring (2 pcs)	Nitrile
49	Tube, transparent	Acrylic plastic
50	Protective tube	Steel, epoxy painted
51A	Stem for RCG-DA (right hand thread)	Steel
51B	Stem for RCG-SR (left hand thread)	Steel
52	Spring	Stainless spring steel
53	Fastening hook	Steel, zincified
87	Tredo-sealing (2 pcs)	Aluminium / nitrile
88	O-ring	Nitrile
89	Connection flange	Steel, epoxy painted
90	Screw (8 pcs)	Stainless steel
91	O-ring	Nitrile
92	O-ring	Nitrile
93	Set screw	Steel
94	Cuff sealing	Steel, zincified and yellow chromated
95	Spring fastener	Stainless steel
96	Screw (4 pcs)	Stainless steel
97	Bevel drive 4:1	Cast iron, epoxy painted

Technical Data: Torque

RAG-SR(Spring closes)

Unit: Nm

Type	Function	Position 0°=closed 90°=open	Spring adapted to air pressure supply							
			2.1 bar 30 psi	2.8 bar 40 psi	3.5 bar 40 psi	4.2 bar 60 psi	4.5 bar 65 psi	5.5 bar 80 psi	6 bar 87 psi	7 bar 100 psi
RAG100-SR	Air opens	0°	2880	3840	4880	5920	6440	8000	8700	10000
		60°	1155	1540	1960	2360	2580	3200	3500	4000
		90°	1440	1920	2440	2960	3220	4000	4350	5000
	Spring closes	90°	2235	2980	3780	4600	5000	6200	6750	7750
		30°	1080	1440	1840	2220	2420	3000	3250	3750
		0°	20	2160	2740	3340	3620	4500	4900	5620
RAG108-SR	Air opens	0°	5760	7680	9760	11840	12880	16000	17400	20000
		60°	2310	80	3920	4720	5160	6400	7000	8000
		90°	2880	3840	2880	5920	6540	8000	8700	10000
	Spring closes	90°	4470	5960	7560	9200	10000	12400	13500	15500
		30°	2160	2880	3680	4440	4840	6000	6500	7500
		0°	3240	4320	5480	6680	7240	9000	9800	112400

RAG-SR(Spring Opens)

Unit: Nm

Type	Function	Position 0°=closed 90°=open	Spring adapted to air pressure supply							
			2.1 bar 30 psi	2.8 bar 40 psi	3.5 bar 40 psi	4.2 bar 60 psi	4.5 bar 65 psi	5.5 bar 80 psi	6 bar 87 psi	7 bar 100 psi
RAG100-SRF	Spring opens	0°	3200	4250	5320	6220	6800	8400	9115	10650
		60°	1080	1440	1800	2160	2315	2816	3089	3600
		90°	1590	2125	2655	3195	3415	4177	4550	5314
	Spring opens	90°	2547	3396	4245	5100	5458	6670	7277	8490
		45°	1200	1600	2000	2400	2570	3140	3429	4000
		0°	2064	2752	3440	4130	4423	5406	5897	6880
RAG108-SRF	Spring opens	0°	6400	8500	10640	12440	13760	16800	18230	21300
		60°	2160	2880	3600	4320	4630	5652	6178	7200
		90°	3180	4250	5310	6390	6830	8354	9100	10630
	Spring opens	90°	5090	6800	8490	10200	10910	13400	14350	16980
		45°	2400	3200	4000	4800	5140	6280	6858	8000
		0°	4130	5510	6830	8260	8850	10810	11795	13760

Technical Data: Torque & Others

RAG-DA

Unit: Nm

Type	Function	Position 0°=closed 90°=open	Air pressure supply							
			2.1 bar 30 psi	2.8 bar 40 psi	3.5 bar 50 psi	4.2 bar 60 psi	4.5 bar 65 psi	5.5 bar 80 psi	6 bar 87 psi	7 bar 100 psi
RAG100-DA	Air opens Spring opens	0°	5082	6760	8600	10400	11300	14000	15250	17000
		60°	2400	3200	4050	4900	5380	6600	7200	8100
		90°	3765	5020	6380	7700	8400	10400	11350	12750
RAG108-DA	Air opens Spring opens	0°	10164	13520	17200	20800	22600	28000	30500	34000
		60°	4800	6400	8100	9800	10760	13200	14400	16200
		90°	7530	10040	12760	15400	16800	20800	22700	25500

Air Consumption

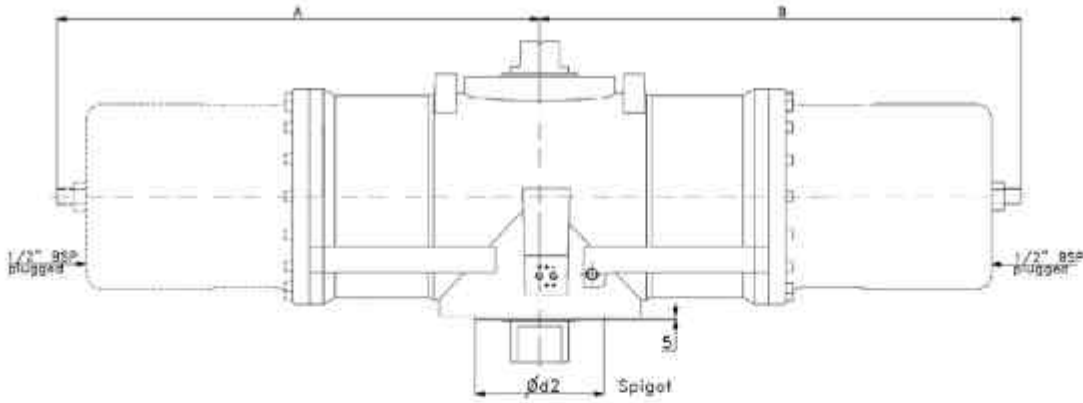
Unit: dm³

Type	Anti-clockwise rotation	Clockwise rotation
RAG100-DA	260	265
RAG100-SR	265	-
RAG108-DA	320	330
RAG108-SR	330	-

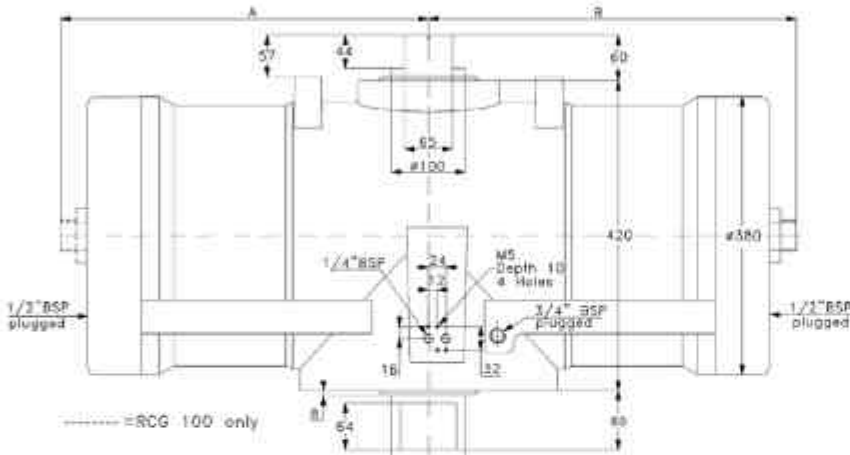


Technical Data: Dimensions

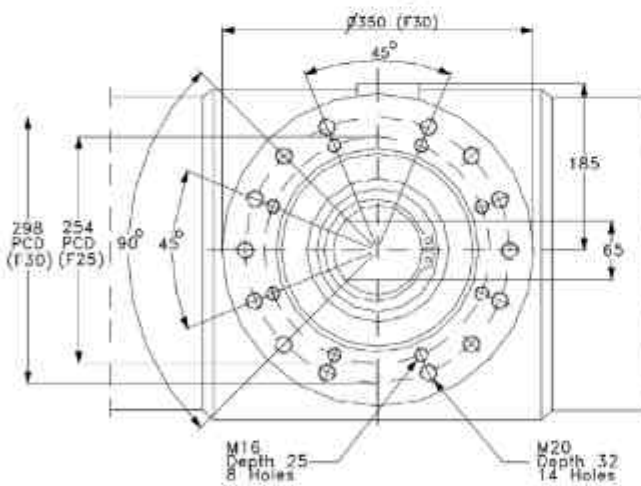
RCG-SR



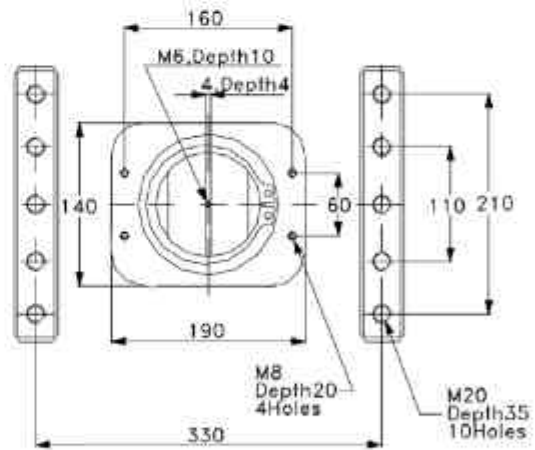
RCG-DA



Mounting face



Top side



Unit:mm

Unit:kg

Type	A	B	d2(f8)
RAG100-DA	520	520	230
RAG100-SR	850	850	230
RAG108-DA	520	520	230
RAG108-SR	850	850	230

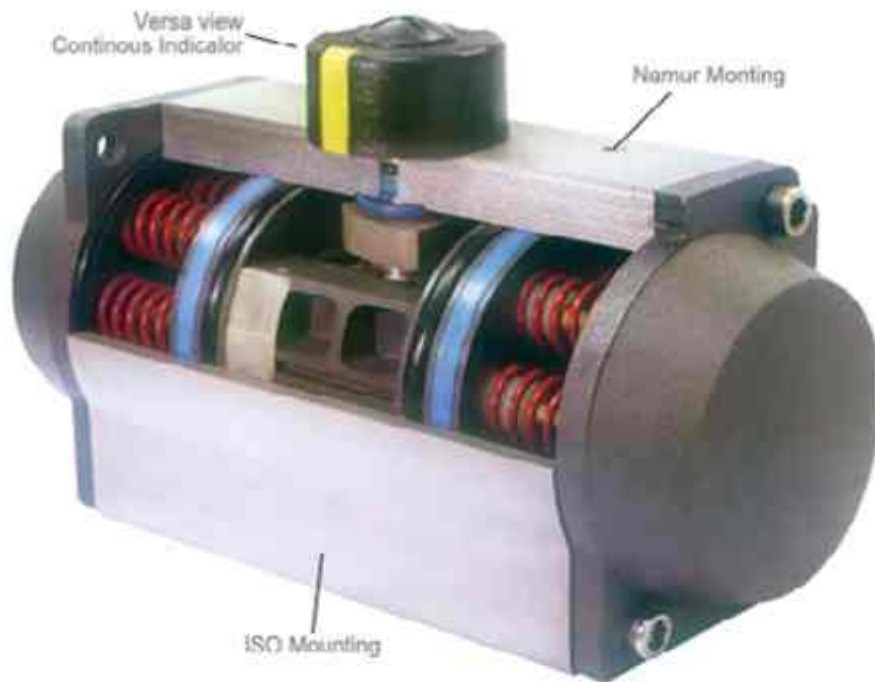
Weight
310
500
620
1000



Rack & Pinion Pneumatic Actuators

RCI-Series

Aluminium Alloy Actuator



Product Features :

- Operating Media:
 - Dry or lubricated air
 - Non-corrosive gases or oil
- Air Supply Pressure:
 - Double acting: 2-8 bar
 - Spring return: 2-8 bar
- Operating Temperature:
 - Standard: -20°C ~ 80°C
 - Low temperature: -40°C ~ + 80°C
 - High temperature: -15°C ~ + 150°C
- Travel Adjustment: Adjustment range of $\pm 4^\circ$ when the pistons at the sides.
- Under normal operating condition, need not accrete lubricant.
- Application: Either indoor or outdoor.
- Highest pressure: The maximum input pressure is 10 bar.

Technical Data: Torque

RCI-SR Actuators

Model	Air Pressure Supply NO of Springs	Air Pressure Supply						Springs Adapted to Air Pressure Supply		Unit: Nm
		4bar		5bar		6bar		90°	0°	
		0°	90°	0°	90°	0°	90°			
RCI52SR	8	9.2	6.0					9.9	6.7	
	10			11.5	6.7			12.4	8.5	
	12					13.8	9.1	14.8	10.2	
RCI63SR	8	18.2	12.4					16.7	10.9	
	10			22.8	15.6			20.9	13.7	
	12					27.3	18.6	25.0	16.4	
RCI75SR	8	23.1	16.9					21.2	16.9	
	10			28.8	21.2			29.0	21.1	
	12					34.9	25.4	34.7	25.3	
RCI82SR	8	37.4	25.8					36.8	25.3	
	10			46.7	32.3			46.0	31.6	
	12					56.1	38.9	55.2	38.0	
RCI92SR	8	52.9	35.2					55.0	37.3	
	10			66.2	44.1			68.7	46.7	
	12					79.4	53.0	82.5	56.0	
RCI105SR	8	81.6	53.5					78.7	50.6	
	10			102.0	66.5			98.4	63.1	
	12					122.5	88.8	118.1	75.9	
RCI125SR	8	117	75					125	84	
	10			146	94			157	105	
	12					176	113	188	125	
RCI140SR	8	205	136					206	137	
	10			256	169			258	172	
	12					307	203	310	206	
RCI160SR	8	309	199					313	221	
	10			386	248			417	279	
	12					463	298	500	335	
RCI190SR	8	531	356					495	320	
	10			664	446			618	400	
	12					797	535	742	480	

RCI-DA Actuators

Model	Air Pressure Supply (Unit : bar)								Unit: Nm
	3	4	4.5	5	5.5	6	7	8	
RCI52DA	12.0	16.0	18.0	20.0	21.9	23.9	27.9	31.9	
RCI63DA	21.9	29.2	32.8	36.5	40.1	43.8	51.1	58.4	
RCI75DA	30.1	40.1	45.1	50.2	55.2	60.2	70.2	80.3	
RCI82DA	47.0	62.7	70.5	78.4	86.2	94.1	109.7	125.4	
RCI92DA	67.7	90.3	101.6	112.9	124.1	135.4	158.0	180.6	
RCI105DA	99.2	132.2	148.8	165.3	181.8	198.4	231.4	264.5	
RCI125DA	150.5	200.6	225.7	250.8	275.9	301.0	351.1	401.3	
RCI140DA	256.5	342.0	384.8	427.5	470.3	513.0	598.5	684.0	
RCI160DA	399.0	532.0	598.5	665.0	731.5	798.0	931.0	1064.0	
RCI190DA	638.4	851.2	957.6	1064.0	1170.4	1276.8	1489.6	1702.4	

Technical Data: Others

Air Consumption

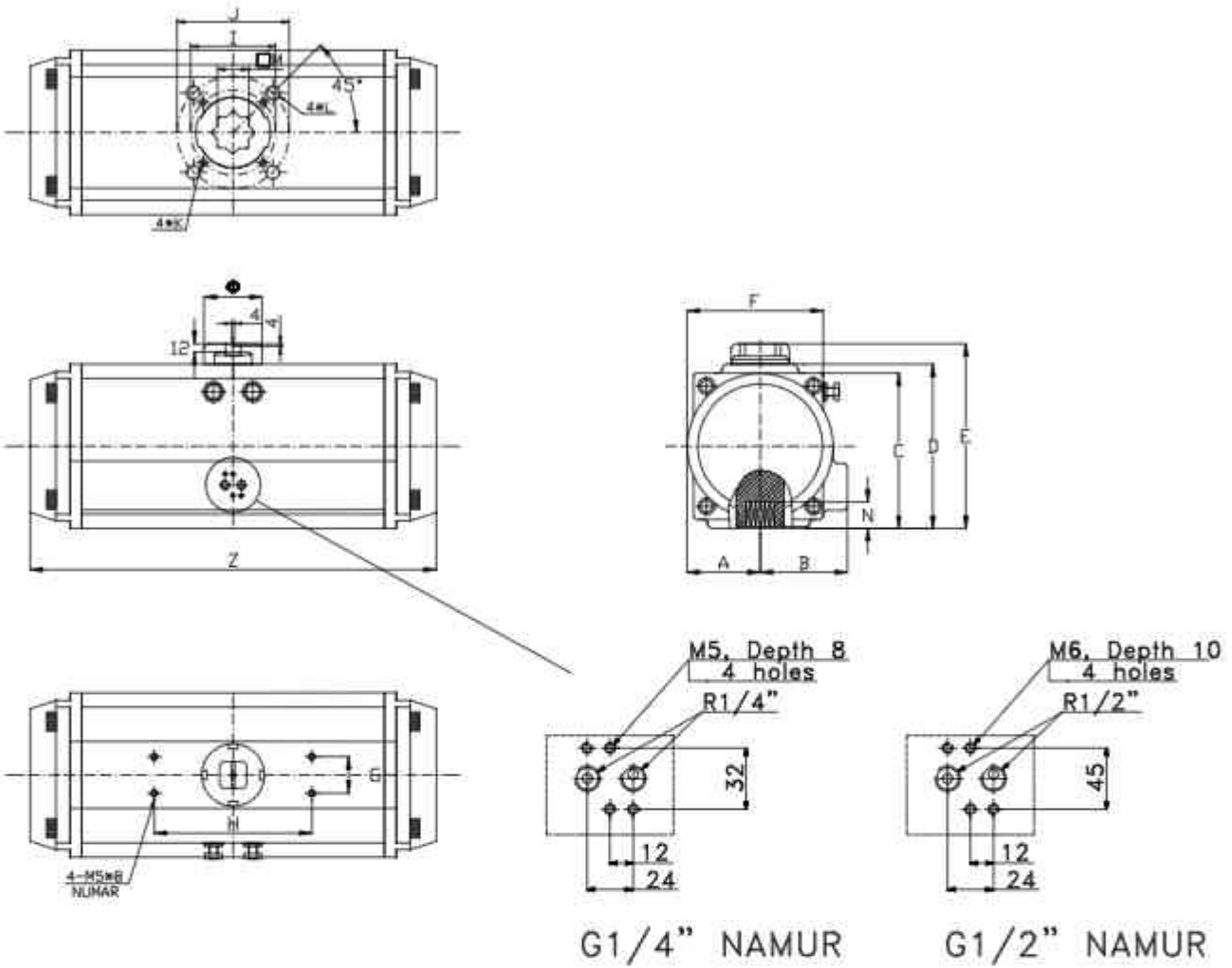
Model	Unit: dm ³		Model	Unit: dm ³	
	Anti-clockwise Rotation	Clockwise Rotation		Anti-clockwise Rotation	Clockwise Rotation
RCI52	0.12	0.16	RCI105	0.95	0.88
RCI63	0.21	0.23	RCI125	1.6	1.4
RCI75	0.3	0.34	RCI140	2.5	2.2
RCI82	0.43	0.47	RCI160	3.7	3.2
RCI92	0.64	0.73	RCI190	5.9	5.4

Open/Close Time

Model	Double Acting		Model	Spring Return					
	0°-90°	90°-0°		NO. Of Springs					
				4+4		5+5		6+6	
				0°-90°	90°-0°	0°-90°	90°-0°	0°-90°	90°-0°
RCI52DA	0.6	0.53	RCI52SR	2.58	0.52	2.62	0.48	2.66	0.44
RCI63DA	0.66	0.58	RCI63SR	2.66	0.6	2.7	0.56	2.74	0.52
RCI75DA	0.72	0.64	RCI75SR	2.75	0.69	2.79	0.65	2.83	0.61
RCI82DA	0.83	0.73	RCI82SR	2.93	0.82	2.97	0.78	3.01	0.74
RCI92DA	1	0.86	RCI92SR	3.18	0.87	3.22	0.83	3.26	0.79
RCI105DA	1.35	1.3	RCI105SR	4.28	1.16	4.32	1.12	4.36	1.08
RCI125DA	2.4	1.79	RCI125SR	4.62	1.31	4.66	1.27	4.68	1.22
RCI140DA	2.5	2.1	RCI140SR	4.78	1.73	4.82	1.69	4.84	1.65
RCI160DA	3.93	2.6	RCI160SR	5.75	3.48	5.79	3.44	5.83	3.4
RCI190DA	4.55	3.45	RCI190SR	8.42	4.58	8.46	4.54	8.5	4.5



Technical Data: Dimensions



Unit:mm

Model	A	B	E	F	G	H	I	J	K	L	M	N	Z	Φ	Thread
RCI52	30	41.5	92	65	30	80	Φ36	Φ50	M5X8	M6X10	11	14	147	Φ40	G1/4"
RCI63	36	47	107.5	72	30	80	Φ50	Φ70	M6X10	M8X13	14	18	168	Φ40	G1/4"
RCI75	42	53	119.5	81	30	80	Φ50	Φ70	M6X10	M8X13	14	18	184	Φ40	G1/4"
RCI82	46	57	128.7	92	30	80	Φ50	Φ70	M6X10	M8X13	17	21	204	Φ40	G1/4"
RCI92	50	58.5	136.5	98	30	80	Φ50	Φ70	M6X10	M8X13	17	21	262	Φ40	G1/4"
RCI105	57.5	64	153	109.5	30	80	Φ70	Φ102	M8X13	M10X16	22	26	268	Φ40	G1/4"
RCI125	67.5	74.5	175	127.5	30	80	Φ70	Φ102	M8X13	M10X16	22	26	301	Φ55	G1/4"
RCI140	75	77	192	137.5	30	80	Φ102	Φ125	M10X16	M12X20	27	31	390	Φ55	G1/4"
RCI160	87	87	217	158	30	80	Φ102	Φ125	M10X16	M12X20	27	31	458	Φ55	G1/4"
RCI190	103	103	260	189	30	130	-	Φ140	-	M16X25	36	40	525	Φ80	G1/4"



Scotch Yoke Pneumatic Actuator

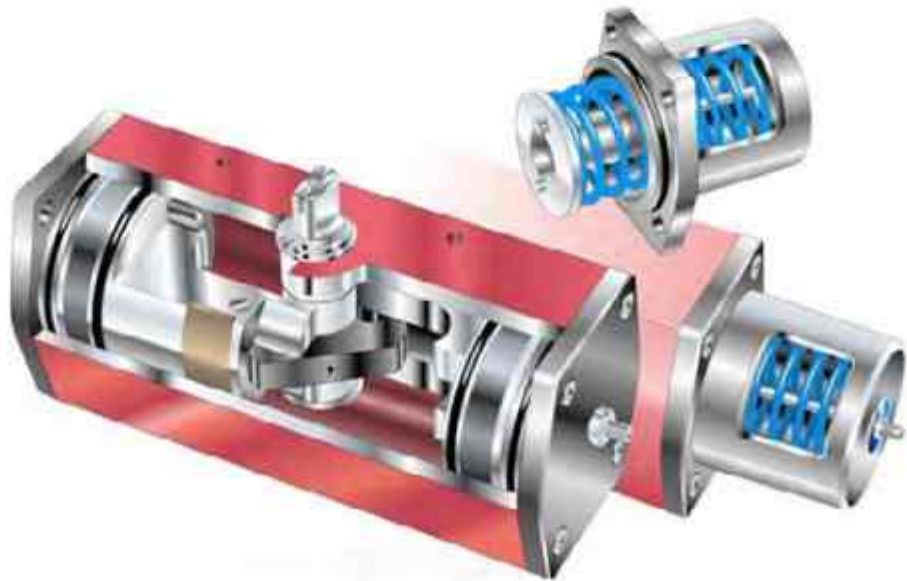
RC-Series

Pneumatic Quarter Turn Actuators

ADQVALVE Pneumatic Actuators in quarter-turn design are based on the well-known Scotch Yoke Principle.

The RC200 series has been equipped with a universal drive shaft which suits both DIN and ISO standards.

This even further facilitates mounting and installation. Low friction sealings in combination with a high surface finish, permanent lubrication and bearings give the actuator high efficiency, low air consumption and a long and maintenance-free life. This ensures a long-term stable economy due to low energy consumption and a minimum of unplanned and costly production shutdowns.



Aggressive environments and complicated applications sometimes require specially adapted solutions: The RC200 series is available in many different design.

Product Features :

- For On-Off and modulating.
- Compact design.
- Connections according to international standards.
- Double acting or single acting with spring return.
- Scotch Yoke principle gives high torque in the end positions.
- 30% pre-tensioned springs to storage power for safety.
- Mounting kits for all types of quarter turn valves.
- Drive shaft in 40Cr (a special kind of alloy)
- Housing in anodized aluminium.
- Precise control, smooth travel in the end positions.

- Housing in anodized aluminium.
- Precise control, smooth travel in the end positions.
- High reliability, long life, three-year warranty.
- High efficiency, low air consumption.
- Temperature range -25°C to +90°C.
- Options: Manual override, MI, customer specified paint, quick acting, speed restrictor, high temperature, low temperature, low temperature Arctic, oil hydraulics, 40Cr alloy drive shaft, and screws in 35CrMo (RAG100-RAG108)

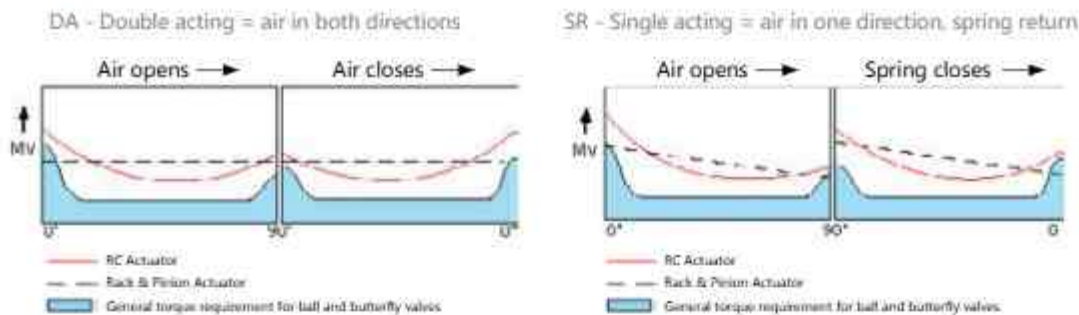
Scotch Yoke

What is Scotch Yoke?

The Scotch Yoke principle is characteristic for its high torque when required at the beginning and end of each operation. This increases safety and reduce the energy consumption.

- Advantages:**
- Increased torque where required.
 - Compact measures. Ca. 30% smaller than rack and pinion actuators.
 - Low air consumption. Ca. 30% less than rack and pinion actuators.
 - Long life.
 - Safe to mount, the pistons cannot be wrongly meshed.
 - Good regulating features, No play in force transmission and low friction because the transmission passes over bearings.
 - Favourable force transmission, gives favourable action in the regulation area. This provides lower turning speed when approaching the end positions.

Torque:



The diagram above compares the torque between Scotch Yoke actuators and rack and pinion actuators at the same stroke volume = the same air consumption. The Scotch Yoke actuator gives ca. 50 % higher starting and closing torque (0°) compared to the rack and pinion actuator.

The diagram for single acting actuators with spring return shows that the Scotch Yoke provides an increased air torque in the spring return position = safety position where a safe function really is required.

The Scotch Yoke in the RC actuator has oblique grooves in order to provide the highest torque in closed position where most valves require the maximum power. The normal sizing of actuators requires a 20-30% safety margin to handle valves which age and wear out. The actuator sizing torque corresponds to the valve torque requirement in closed position (0°) for both starting and closing. These requirements apply to both Scotch Yoke and rack and pinion actuators. The diagram clearly shows that a rack and pinion actuator increases 1.5 times in size compared to a Scotch Yoke actuator in order to operate the same valve.

Technical Data: Torque

RC-SR Actuators (Spring closes)

Unit: Nm

Type	Function	Position 0° = closed 90° = open	Spring-adapted to air pressure supply								
			2.1 bar 30 psi	2.8 bar 40 psi	3.5 bar 40 psi	4.2 bar 60 psi	4.5 bar 65 psi	5.5 bar 80 psi	6 bar 87 psi	7 bar 100 psi	
RC 265-SR	Air opens	0°	280	373	467	560	607	671	730	935	
		60°	113	150	187	225	244	280	305	360	
		90°	125	167	208	250	271	303	330	425	
	Spring closes	90°	210	280	350	420	455	560	610	695	
		30°	103	137	171	205	222	273	330	355	
RC 270-SR	Air opens	0°	355	473	592	710	769	947	1030	1210	
		60°	155	207	258	310	336	413	440	520	
		90°	190	253	317	380	412	507	550	640	
	Spring closes	90°	315	420	525	630	682	840	910	1060	
		30°	155	207	258	310	336	413	440	520	
RC280-SR	Air opens	0°	715	953	1192	1430	1549	1907	2080	2430	
		60°	310	413	517	620	672	827	900	1050	
		90°	380	507	633	760	823	1013	1110	1290	
	Spring closes	90°	635	847	1058	1270	1376	1693	1840	2150	
		30°	310	413	517	620	672	827	900	1050	
RC88-SR	Air opens	0°	435	580	725	870	942	1160	1260	1470	
		0°	1425	1900	2380	2854	3092	3809	4155	4855	
		60°	614	820	1029	1234	1339	1648	1794	2094	
	Spring closes	90°	753	1010	1260	1514	1640	2020	2215	2574	
		90°	1265	1689	2110	2534	2747	3380	3674	4294	
		30°	614	826	1028	1235	1339	1648	1793	2093	
		0°	864	1155	1444	1733	1879	2315	2515	2934	



Technical Data: Torque

RC-SR Actuators(Spring Opens)

Unit:Nm

Type	Function	Position 0°=closed 90°=open	Spring adapted to air pressure supply								
			2.1 bar 30 psi	2.8 bar 40 psi	3.5 bar 40 psi	4.2 bar 60 psi	4.5 bar 65 psi	5.5 bar 80 psi	6 bar 87 psi	7 bar 100 psi	
RC 265-SRF	Spring opens	0°	251	335	419	500	536	670	730	850	
		60°	92	123	154	175	188	230	260	300	
		90°	113	150	188	225	241	300	325	375	
	Spring opens	90°	188	250	313	375	402	500	525	620	
		45°	101	135	169	200	214	260	290	335	
RC 270-SRF	Spring opens	0°	158	210	270	320	350	440	445	525	
		0°	350	480	620	750	810	1010	1100	1250	
		60°	130	175	220	270	290	365	400	450	
	Spring opens	90°	155	210	270	320	350	440	480	550	
		90°	270	370	470	570	620	770	830	1000	
RC280-SRF	Spring opens	45°	145	195	250	300	330	410	430	540	
		0°	230	310	390	480	520	645	680	810	
		0°	730	1000	1270	1540	1670	2080	2250	2500	
	Spring opens	60°	260	360	460	550	600	750	780	820	
		90°	320	440	560	680	740	920	1000	1100	
RC88-SRF	Spring opens	90°	560	770	980	1180	1290	1600	1700	2000	
		Air opens:	45°	290	400	510	620	670	835	900	1100
		0°	460	630	805	980	1060	1320	1380	1700	
	Spring opens	0°	1455	1995	2534	3074	3235	4155	4444	4993	
		60°	513	714	915	1095	1194	1494	1553	1634	
Spring opens	90°	634	873	1114	1354	1474	1833	1995	2195		
	90°	1115	1533	1954	2355	2573	3195	3394	3994		
	45°	5793	794	1013	1234	1335	1664	1795	2195		
	0°	915	1255	1605	1954	2114	2635	2753	3394		



Products

RC-Series

Technical Data: Torque

RC-DA

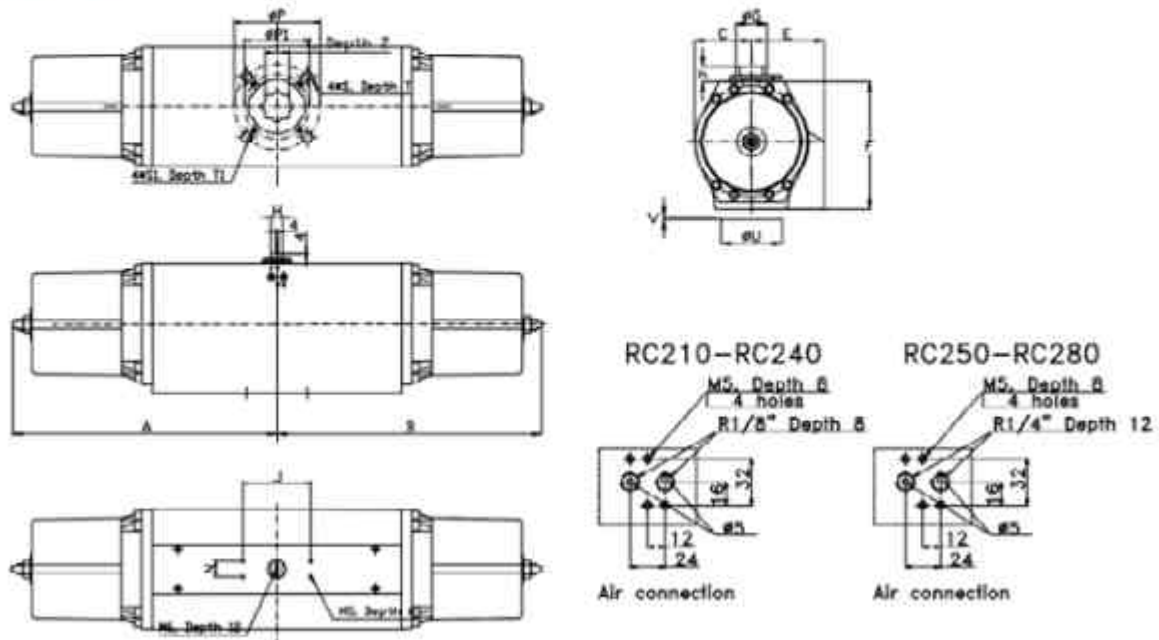
Unit: Nm

Type	Function	Position 0°=closed 90°=open	Air pressure supply							
			2.1 bar 30 psi	2.8 bar 40 psi	3.5 bar 50 psi	4.2 bar 60 psi	4.5 bar 65 psi	5.5 bar 80 psi	6 bar 87 psi	7 bar 100 psi
RC265-DA	Air opens	0°	432	576	720	864	926	1188	1296	1512
	Spring opens	60°	203	271	338	406	435	556	606	711
		90°	307	409	512	614	658	884	921	1075
RC270-DA	Air opens	0°	630	840	1050	1260	1350	1733	1890	2200
	Spring opens	60°	315	420	525	630	675	862	940	1100
		90°	455	607	758	910	975	1247	1360	1590
RC280-DA	Air opens	0°	1270	1693	2117	2540	2721	3483	3800	4450
	Spring opens	60°	635	847	1058	1270	1361	1742	1900	2220
		90°	915	1220	1525	1830	1961	2512	2740	3190
RC880A	Air opens	0°	2535	3380	4230	5074	5440	6958	7194	8895
	Spring opens	60°	1274	1690	2110	2535	2717	3580	3795	4434
		90°	1823	2435	3050	3653	3916	5019	5473	6374



Technical Data: Dimensions

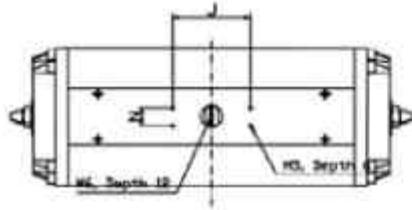
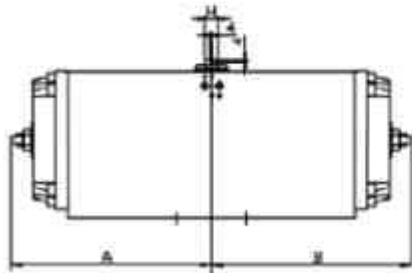
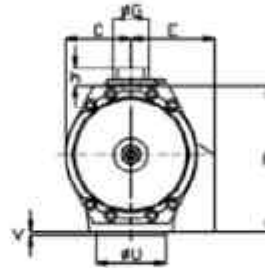
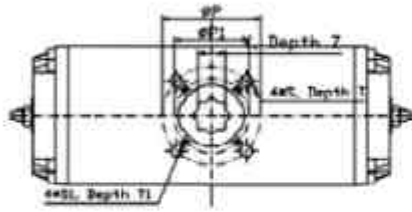
RC-SR



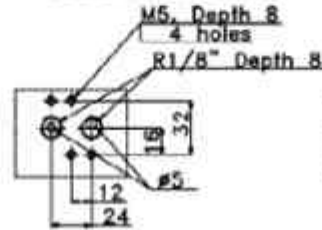
Model	A	B	C	E	F	G	H	J	K	Unit:mm									
										FI	P	S	T	FI1	P1	S1	T1	Y	Z
RC210-SR	45	150								F05	50	M6	11	-	-	-	-	14	19
RC220-SR	150	150	32	41	75	16	10			F05	50	M6	11	-	-	-	-	14	19
RC230-SR	65	200								F10	102	M10	17	F07	70	M8	14	17	30
RC240-SR	200	200	49	55	110	25	16	80	30	F10	102	M10	17	F07	70	M8	14	22	30
RC250-SR	90	285								F12	125	M12	21	F10	102	M10	17	27	37
RC260-SR	285	285	69	75	155	35	22			F12	125	M12	21	F10	102	M10	17	27	37
RC265-SR	317	317	76	76	205	35	22	80		F12	125	M12	21	-	-	-	-	27	37
RC270-SR	145	510								F14	140	M16	25	-	-	-	-	36	64
RC280-SR	510	510	110	110		60	40	130	30	F16	165	M20	32	F12	140	M16	25	46	64
RC88-SR	510	510			495					F30/F25	298/254	M20/ M16	32/25	F16	165	M20	32	60	40
RAG100SR	850	850	188	188	420	90	65	160	60	F30	298	M20	32	F25	254	M25	25	100/65	64
RAG108SR	850	850			964														

Technical Data: Dimensions

RC-DA

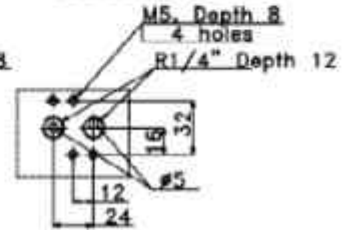


RC210-RC240



Air connection

RC250-RC280



Air connection

Unit:mm

Model	A	B	C	E	F	G	H	J	K	FI	P	S	T	FI1	P1	S1	T1	Y	Z
RC265-DA	195	195	76	76	205	35	22	80	30	F12	125	M12	21	-	-	-	-	27	37
RC270-DA	145	300			248					F14	140	M16	25					36	64
RC280-DA	300	300	110	110		60	40	130		F16	165	M20	32	F12	140	M16	25	46	64
RC88-DA	300	300			495					F30/F25	298/254	M20/ M16	32/25	F16	165	M20	32	60	40
RAG100DA	475	475	188	188	420	90	65	160	60	F30	298	M20	32	F25	254	M25	25	100/65	64
RAG108DA	475	475			964														

Technical Data: Others

Air Consumption(SR)

Unit:dm³

Type	RC265-SR	RC270-SR	RC280-SR	RC88SR	RAG100-SR	RAG108-SR
Anti-Clockwise/Clockwise	36	54	67	134	281	562
Standard air outlet size	R1/4"	R1/4"	R1/4"	R1/4"+1/2"	-	-

Air Consumption(DA)

Unit:dm³

Type	RC265-DA	RC270-DA	RC280-DA	RC88DA	RAG100-DA	RAG108-DA
Anti-Clockwise	32	33	66	132	276	552
Clockwise	36	54	67	134	281	562
Standard air outlet size	R1/4"	R1/4"	R1/4"	R1/4"+1/2"	-	-

Weight Table(SR)

Unit:kg

Model	RC210-SR	RC220-SR	RC230-SR	RC240-SR	RC250-SR	RC260-SR	RC265-SR	RC270-SR	RC280-SR	RC88-SR	RAG100SR	RAG108SR
Weight	1.5	2.2	4.2	7	12.4	18.5	26.6	45	88	178	450	910

Weight Table(DA)

Unit:kg

Model	RC265-DA	RC270-DA	RC280-DA	RC88-DA	RAG100DA	RAG108DA
Weight	18.8	32	42	86	310	630

